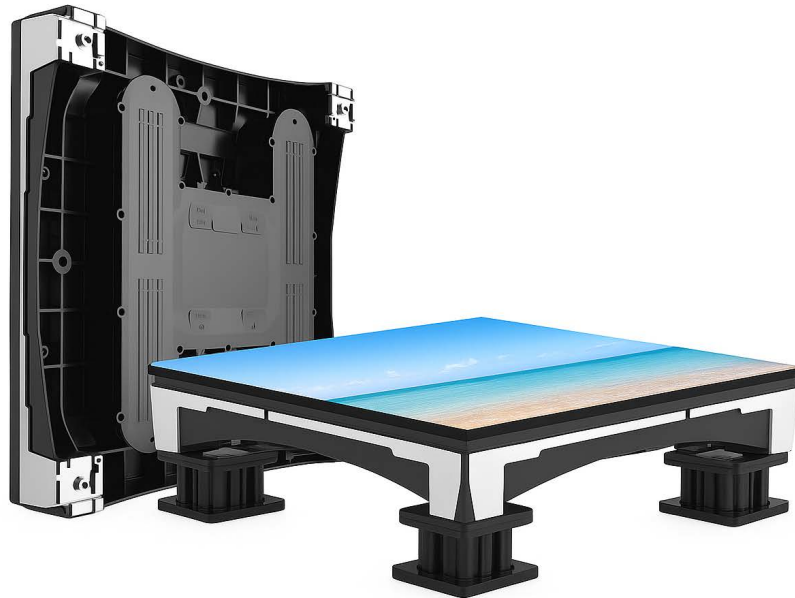


# Indoor Interactive Floor Display

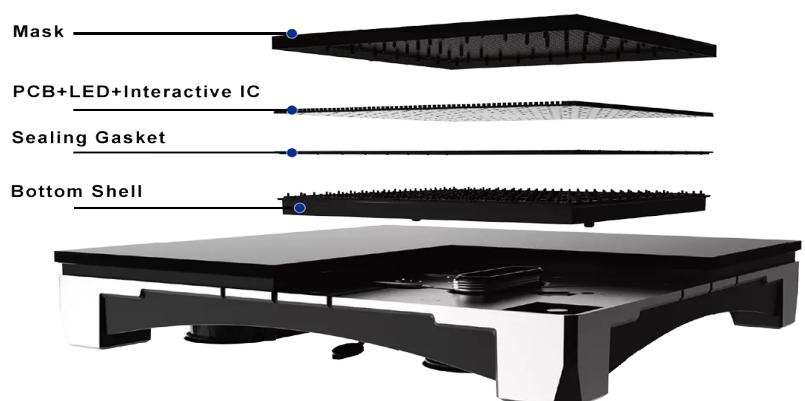


## Immersive • Durable • Interactive

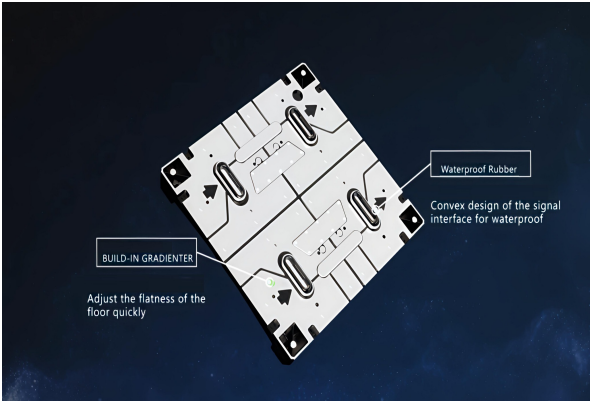
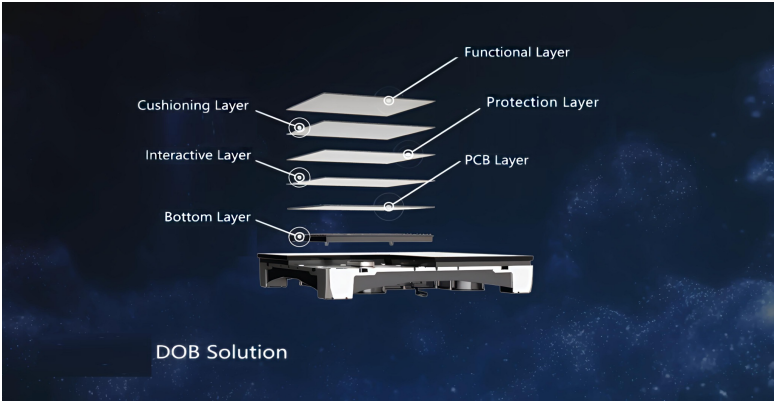
Our advanced interactive LED floor panels deliver stunning visuals, durability, and full interactivity for immersive environments. With a robust structure and waterproof design, they are ideal for exhibitions, events, showrooms, and stage applications.

### Key Features

- High-resolution display with pixel pitches of 2.5mm and 3.9mm.
- Brightness up to 4500 nits for vivid visuals even under strong lighting.
- Built-in gradienter for quick floor flatness adjustment.
- Waterproof rubber and sealed interfaces for reliable performance.
- Layered structure with cushioning, protection, and interactive technology.
- Durable design with 100,000 hours lifetime.



# Experience Innovation



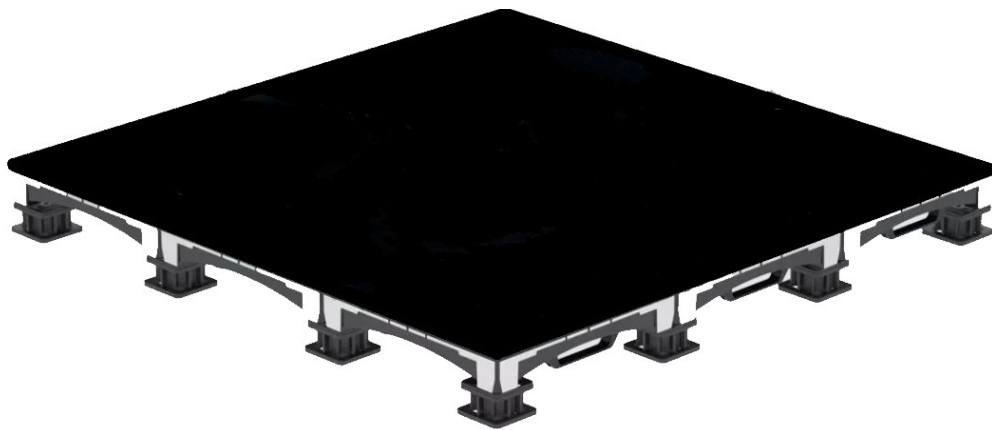
Engineered for real-world use: tough construction, vibrant visuals, and smooth interactive response. Perfect for high-traffic venues where durability and performance matter.

## Technical Specifications

Pixel Pitch	2.5mm	3.9mm
Diode	SMD1415	SMD1921
Pixel Density (sqm)	160,000	65,536
Module Resolution	84 x 84	64 x 64
Module Size	250 x 250 mm	250 x 250 mm
Panel Size	500 x 500 mm	500 x 500 mm
Panel Resolution	200 x 200	128 x 128
Contrast Ratio	1500:1	1500:1
Bit Rate	16 bit	16 bit
Scan Rate	1/24	1/16
Refresh Rate	3840 Hz	3840 Hz
Lifetime	100,000 h	100,000 h
IP Rating	IP55/IP40	IP55/IP40
Operating Temp.	-20C to 50C	-20C to 50C
Storage Temp.	-20C to 60C	-20C to 60C
Operating Voltage	110-240V	110-240V
Max. Power Consumption	600 W/sqm	600 W/sqm
Avg. Power Consumption	180 W/sqm	180 W/sqm
Weight	13.5 kg	13.5 kg

Designed for reliability and interactivity, our LED floor displays create unforgettable experiences.

Adjustable feet (55-80mm)



Drawing

